

Valhallavägen

System: Schüco FW50+
 Finish: Structure - outside - Natur Elox
 - inside - RAL 9010

Door System : Schüco ADS 70.HI

Door fittings : Nob outside: FSB 0802 stainless steel
 Handle inside: FSB 1080 stainless steel
 Plate: FSB 15240001 stainless steel
 Doorbell: FSB 3863 stainless steel
 Lock: Assa 2002
 Strike: 1487-1

Window System : Schüco AWS 75 BS.HI

Quantity: 1pc

FASADGLAS

6 MM HÄRDAT
 K1: RAL 9010 REINWEISS, JÄRNFRITT GLAS
 K2: RAL 1018 ZINNGELB
 K3: RAL 1015 HELLELFENBEIN
 K4: RAL 1012 CITRONENGELB
 K5: RAL 1033 DAHLIENGELB

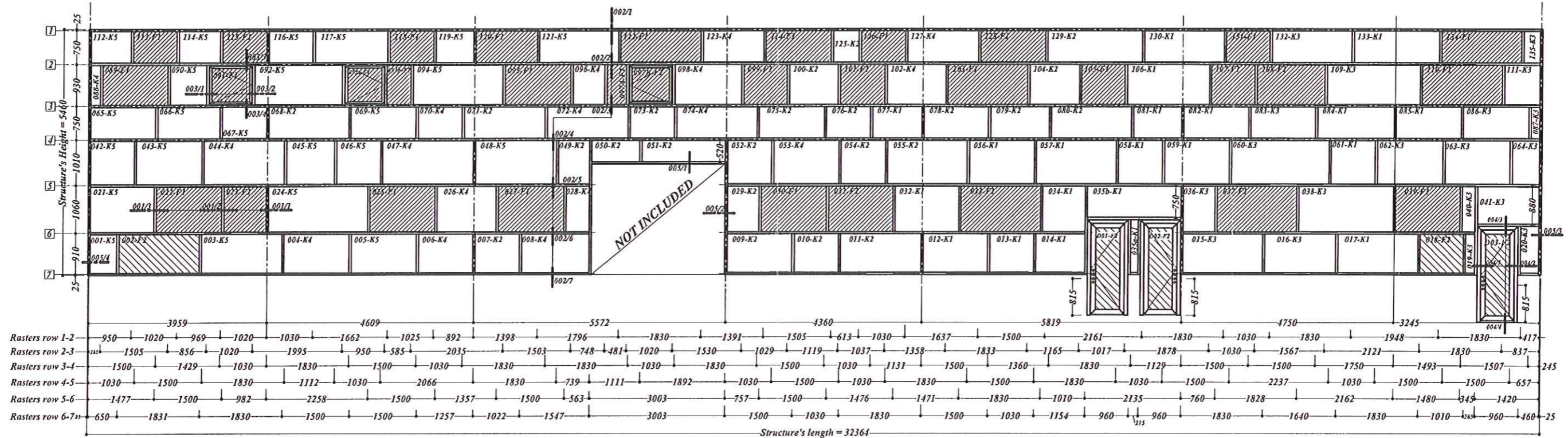
KLARGLAS MOT VALLHALLAVÄGEN - 42 mm:

66.2 STRATOPHONE / 20 ARG /
 44.2 STRATOPHONE PLANIBEL TOP

F1: KLARGLAS.
 F2: LAMELLGLAS MED OPALFOLIE

GLASS I DÖRRAR - 35 MM

6 mm tempered / 20 ARG / 4.4.2



Glass Legend

- "K" glass type
- "F1" glass type
- "F2" glass type

MODIFICATION		DATE
PROJECT MANAGER:		TOBIAS BJERNÉR
DESIGNER:		POPA DANIEL
CONTROLLER:		SZILAGYI ZSOLT
PROJECT:		KV. BECKASINEN 14
CUSTOMER:		sveamalm
DATE:	16.02.2009.	PROJECT NUMBER:
VIEW DRAWING		591
FASAD MOT VALLHALLAVÄGEN		STRUCTURE:
PROJECT NUMBER:		591
DRAWING:		PROFILTYPE:
DRAWING NUMBER:		SCHÜCO FW50+
REV:		591/V/001

Frejgatan

System: Schüco FW50+
 Finish: Structure - outside - Natur Elox
 - inside - RAL 9010
 Door System : Schüco ADS 70.HI
 Door fittings : Nob outside: FSB 0802 stainless steel
 Handle inside: FSB 1080 stainless steel
 Plate: FSB 15240001 stainless steel
 Doorbell: FSB 3863 stainless steel
 Lock: Assa 2002
 Strike: 1487-1
 Window System : Schüco AWS 75 BS.HI
 Quantity: 1pc

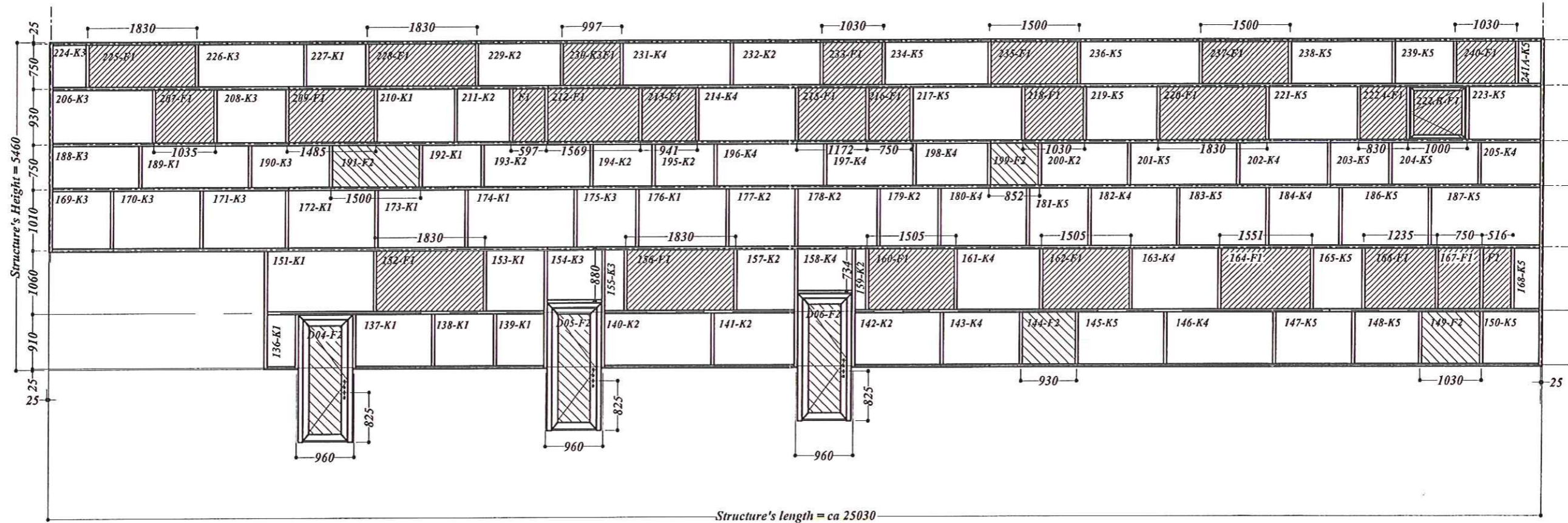
FASADGLAS

6 MM HÄRDAT
 K1: RAL 9010 REINWEISS. JÄRNFRITT GLAS
 K2: RAL 1018 ZINGGELB
 K3: RAL 1015 HELLELFENBEIN
 K4: RAL 1012 CITRONENGELB
 K5: RAL 1033 DAHLIENGELB

KLARGLAS MOT FREJGATAN - 42 mm:
 10 MM FLOAT / 20 ARG /
 64.2 STRATOPHONE PLANIBEL TOP

F1: KLARGLAS.
 F2: LAMELLGLAS MED OPALFOLIE

GLASS I DÖRRAR - 35 MM
 6 mm tempered / 20 ARG / 4.4.2

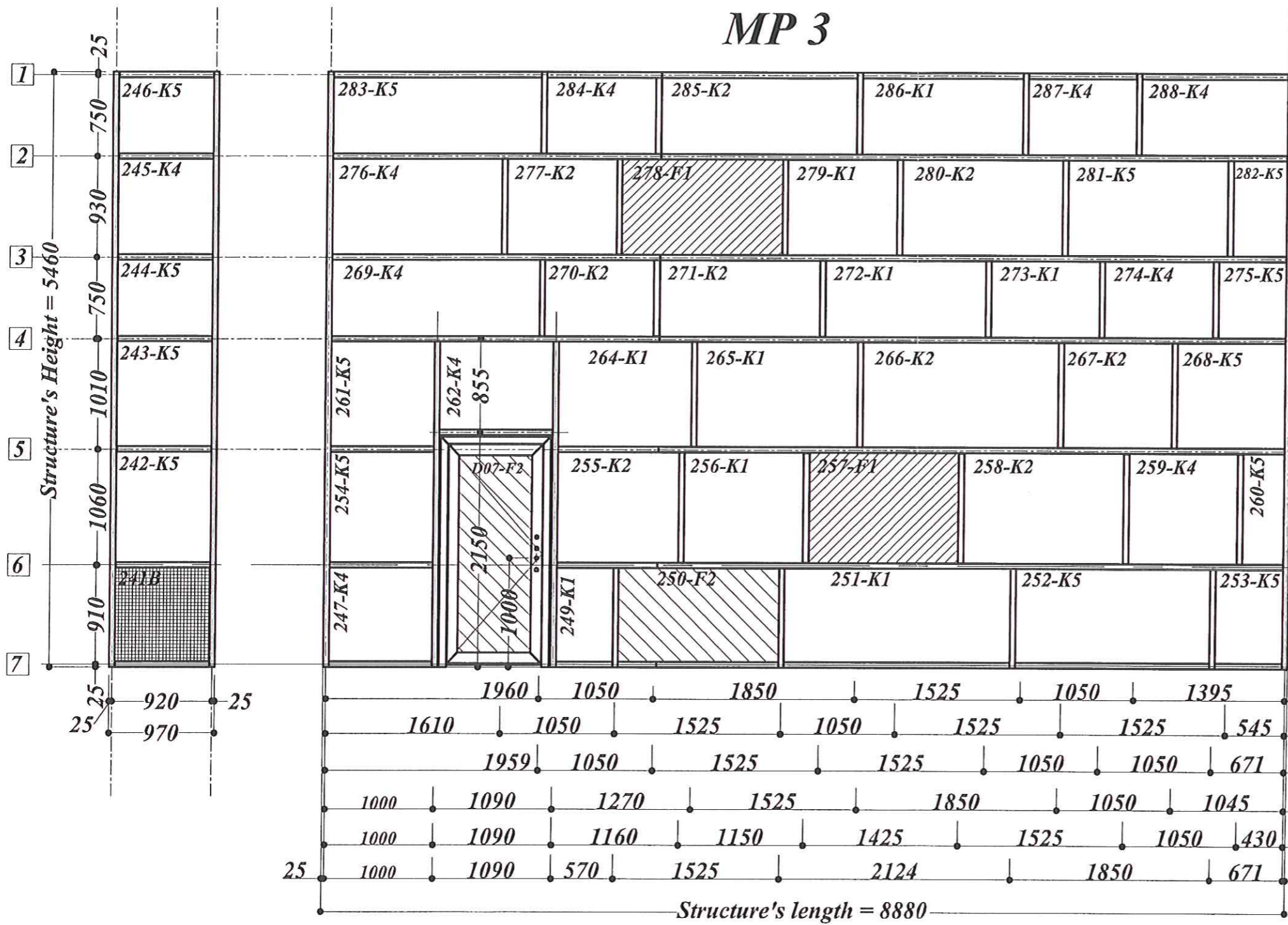


Glass Legend

- "K" glass type
- "F1" glass type
- "F2" glass type

MODIFICATION		DATE
PROJECT MANAGER:		NARVA GLASS FASSADE TECHNIK Kft. 1239 Bp. Ócsal út 1-3. TEL: 06-1-287-02-22 FAX: 06-1-287-02-24
DESIGNER:		
CONTROLLER:		
<input type="checkbox"/> GRANSK. HANDL. PROJECT:		CUSTOMER:
<input type="checkbox"/> BYGGHANDLING KV. BECKASINEN 14		sveamalm
<input checked="" type="checkbox"/> RELATIONSHANDL.		
DATE: 18.02.2009.	DRAWING:	PROJECT NUMBER: 591
VIEW DRAWING		PROFILTYPE: SCHÜCO FW50+
FASAD MOT FREJGATAN		DRAWING NUMBER: 591/V/002
		SCALE: REV:

MP 3



FASADGLAS

6 MM HÄRDAT

K1: RAL 9010 REINWEISS. JÄRNFRITT GLAS
 K2: RAL 1018 ZINKEGELB
 K3: RAL 1015 HELLELFENBEIN
 K4: RAL 1012 CITRONENGELB
 K5: RAL 1033 DAHLIENGELB

KLARGLAS MP3 - 42 mm:
 10 MM FLOAT / 20 ARG /
 64.2 STRATOPHONE PLANIBEL TOP

F1: KLARGLAS.
 F2: LAMELLGLAS MED OPALFOLIE
 JÄRNFRITT GLAS

GLASS I DÖRRAR - 35 MM
 6 mm tempered / 20 ARG / 4.4.2 med opalfolie

Glass Legend

- "K" glass type
- "F1" glass type
- "F2" glass type

System: Schüco FW50+
 Finish: Structure - outside - Natur Elox
 - inside - RAL 9010
 Door System : Schüco ADS 70.HI
 Door fittings : Nob outside: FSB 0802 stainless steel
 Handle inside: FSB 1080 stainless steel
 Plate: FSB 15240001 stainless steel
 Doorbell: FSB 3863 stainless steel
 Lock: Assa 2002
 Strike: 1487-1
 Window System : Schüco AWS 75 BS.HI
 Quantity: 1pc

MODIFICATION		DATE	
PROJECT MANAGER:		TOBIAS BJERNÉR	
DESIGNER:		POPA DANIEL	
CONTROLLER:		SZILAGYI ZSOLT	
PROJECT:		KV. BECKASINEN 14	
CUSTOMER:		sveamalm	
DATE:	18.02.2009.	DRAWING:	VIEW DRAWING MP3
PROJECT NUMBER:	591	PROFILETYPE:	SCHÜCO FW50+
STRUCTURE:	MP3	DRAWING NUMBER:	591/V/003
SCALE:		REV:	